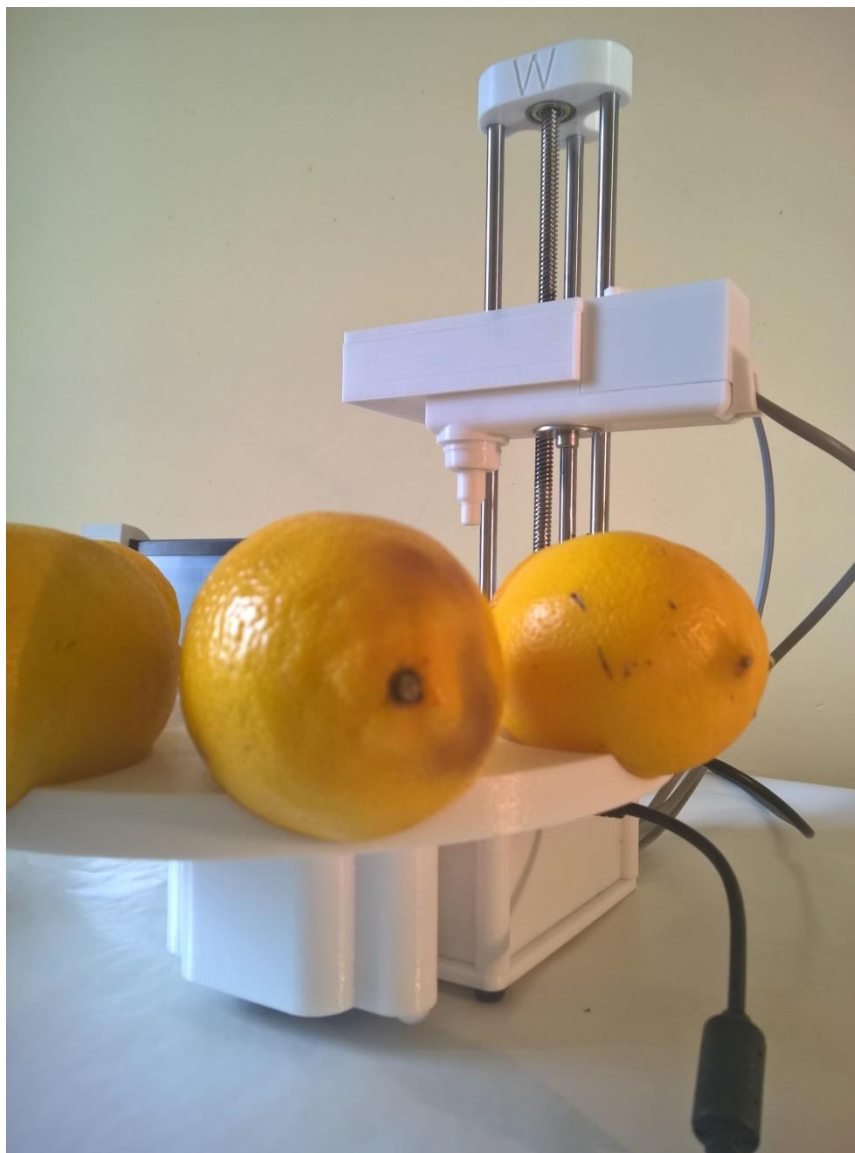


The Agrosta®Wonderful has been designed in Septembre 2017 in order to provide a top accurate machine for testing automatically Citrus Fruits



Many thanks for having acquired an Agrosta instrument

Your package contains :

- The machine itself
- 2 turntables (According to your request, 2 identical or 2 different turntables)
- A manual with certificate of conformity
- A 110V / 220 V power supply
- A Usb stick with the software
- A Usb cable

The Agrosta®Wonderful is entirely designed and assembled in France. The motherboards come from USA, and the shield boards are made in Hong Kong and USA.

The Agrosta®Wonderful is not waterproof! It is a precision instrument; please take care to avoid dropping or knocking it.

The Agrosta®Wonderful has a two year guarantee from its date of shipment

- Minimum grams : 10
- Maximum grams : 5000 (If pressure of more than 5000 applied, the software will display 5000)
- Resolution: +/- 0.5 grams
- Software compatible with Windows XP, 7, 8 and 10

1) Software Setup / Demo cycle of machine

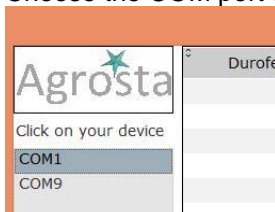
- Don't connect the machine
- Insert the Usb stick in your computer
- Double click on "INSTALL.EXE"
- Follow the setup procedure
- At the end of setup, the software is launched
- During first launch of the soft, the driver installation is launched as well
- Follow the driver installation procedure, and then close the software before connecting your machine



- Connect your machine Usb plug only
- Wait till the machine is recognized and installed by your computer (Driver automatic setup, 1 minute maxi)
- Launch "Wonderful" software from the desktop of your computer



- Connect power plug
- Don't place any turntable on the motor
- Choose the COM port corresponding to your machine, or check different COM ports

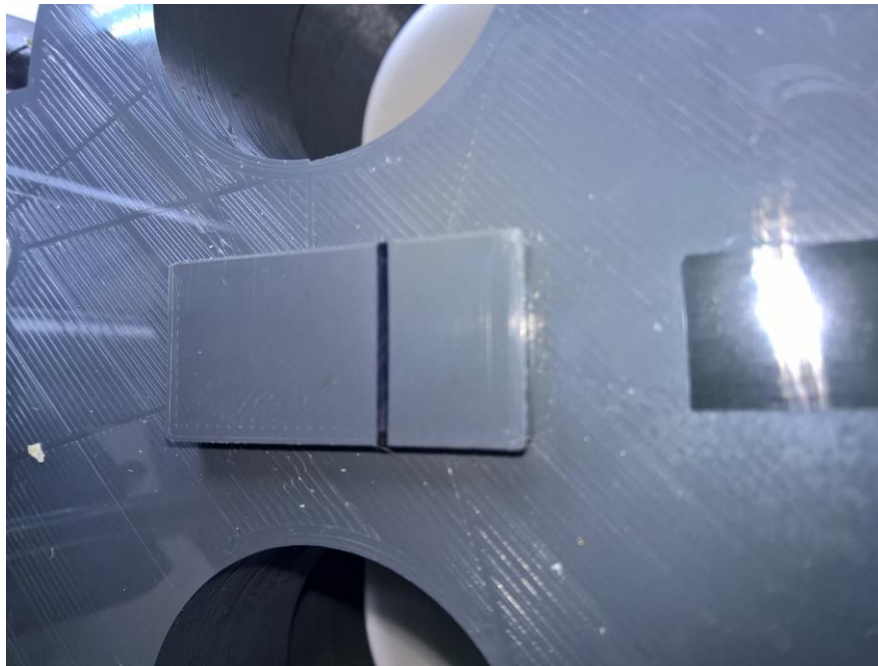


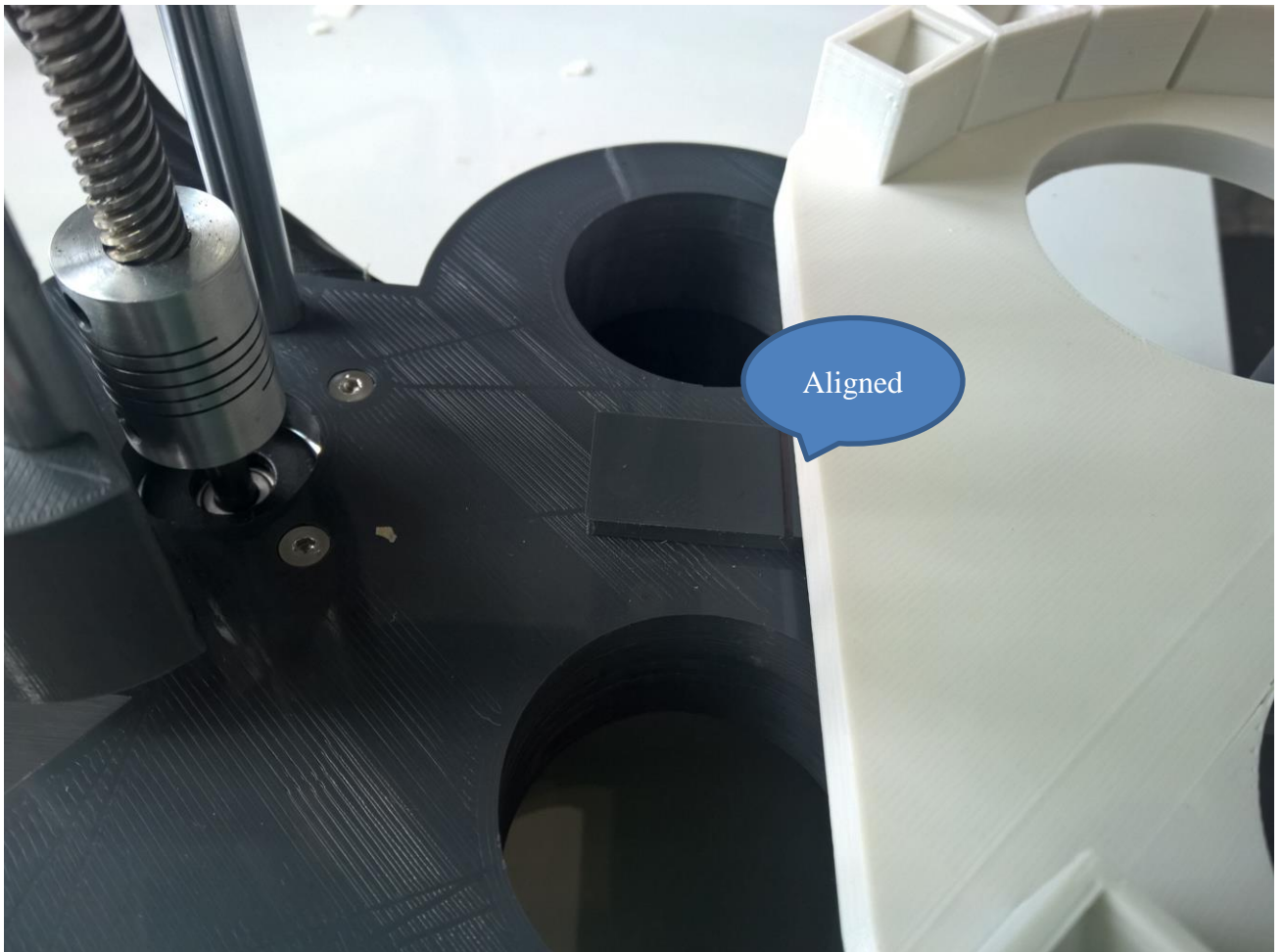
- Click on "OK" (**Click 2 TIMES !!**)
- Click on "START WITH TURNTABLE 7 CUPS"
- Your machine starts a demo cycle..

- Place the 2 arrows as indicated by turning the plastic square fixed on the motor



- Place the turntable on the motor (align the turntable with the black line)





2) Using the machine for first time

The following turntables are proposed :

“Turntable 7” types

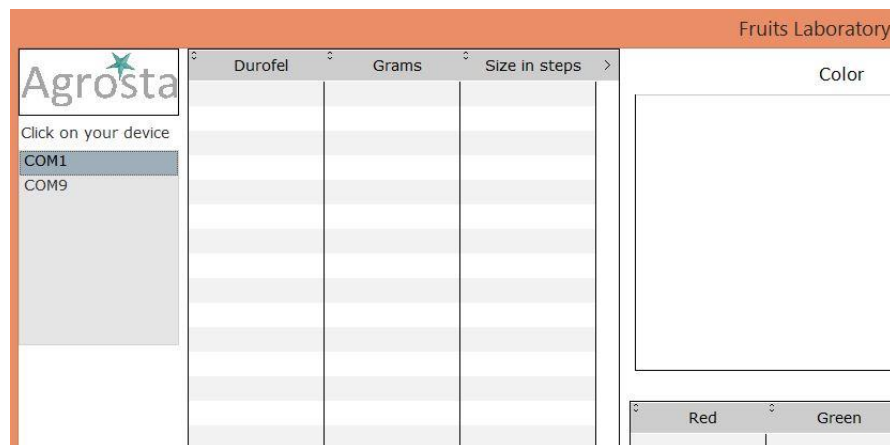
- Adapted for Lemon

“Turntable 6” types

- Adapted for small size and middle size oranges

“Turntable 5” types

- Adapted for Pomelo and large size oranges
- Connect first USB plug, and the Power plug
- Launch the software from the desktop of your computer (double click on the star)
- Choose the COM port corresponding to your machine, or check different COM ports



Please note that when connecting the instruments to power supply, the stepper motors are immediately active – In order to increase the life time of motors, it is recommended to disable the stepper motors when the instrument is not used by disconnecting the power supply

AGROSTA Wonderful

Click on your COM1

Size in mm
Fill Initial size

mLB

Grams

Parameters

Refresh

OK

Red Factor 0,4850

Green Factor 0,4490

Blue Factor 0,8290

Initial size 188

High Speed * 80

Low Speed after contact 300

Stroke after contact 26

Contact detection / Grams 9

5 Cups

5 Cups

* Speed in microseconds

0.1 mm

1) Select the COM corresponding to your machine

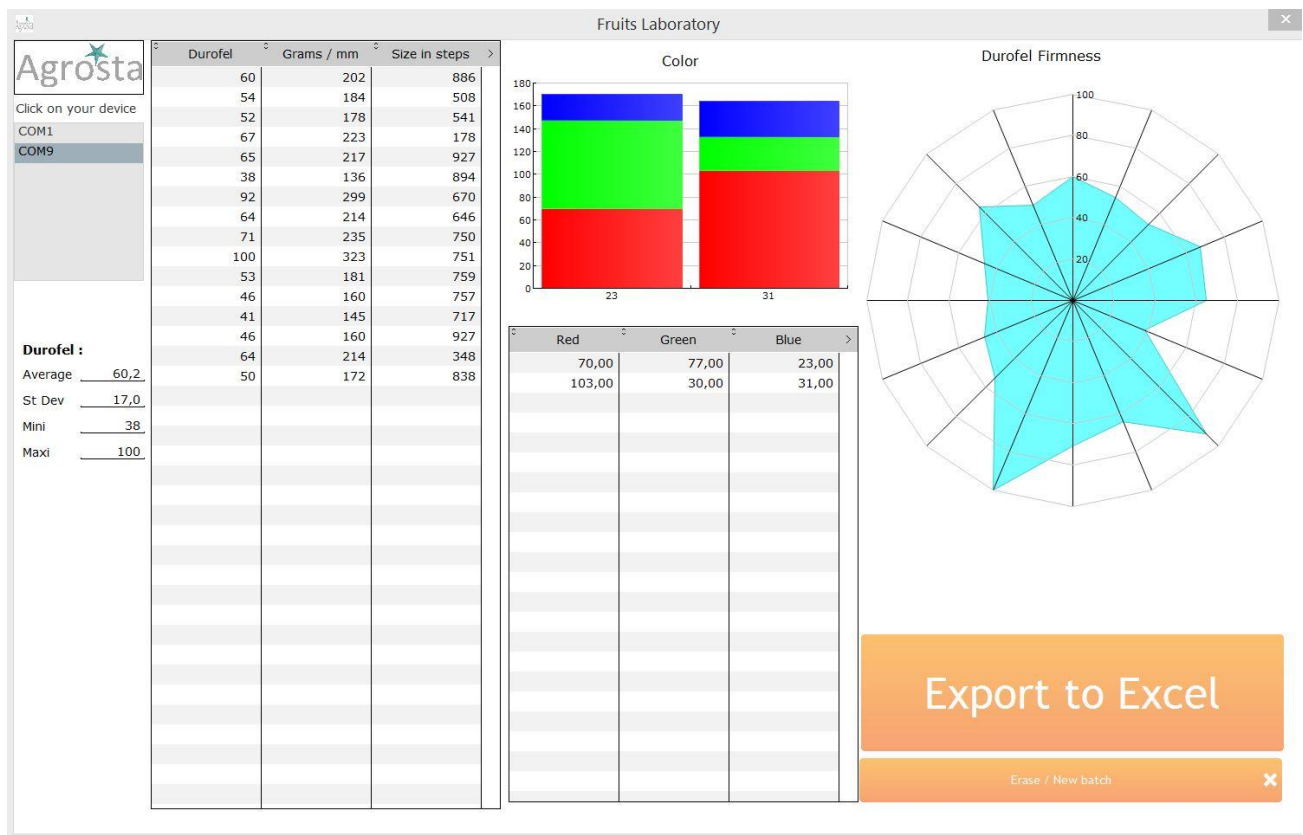
2) If you have connected your machine after software start, click here

3) Click here to communicate with machine

4) Enter size between sensor and bottom of cup here

5) Click on the button corresponding to the turntable you are using for starting a cycle (Click 2 times for first cycle)

In the software, the data are displayed (firmness/size/color)
 The firmness is given in Grams and in mLb



Statistics are provided for the Durofel firmness (on the left side of the window)
 When you have finished your batch, you can record the tables in Excel (choose the file name and place)

IMPORTANT NOTICE CONCERNING THE COLOR OF CITRUS :

The RGB standard gives maximum values for pure white and 0/0/0 for pure black

Be aware that a ripe orange will seem to be more red to human eye, but will be darker – So the value of red will be higher than Green and Blue, but all values will be quite low

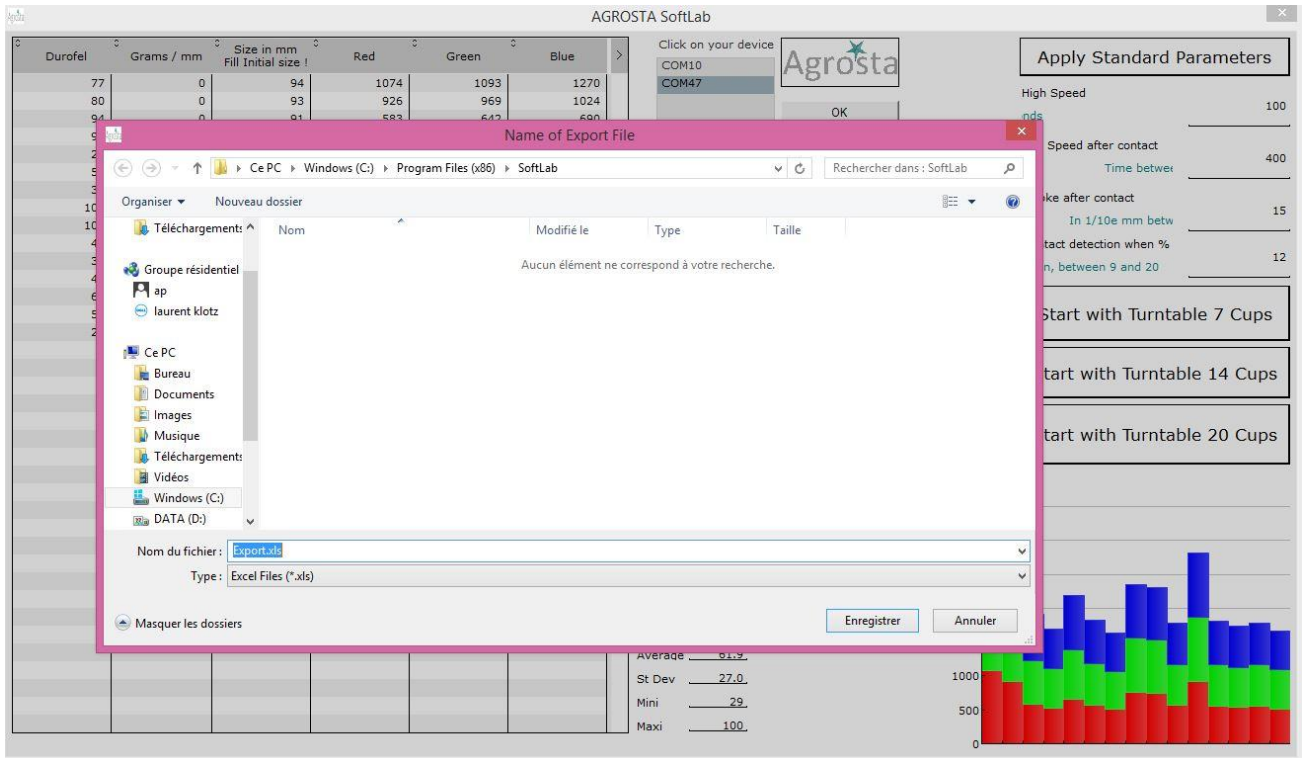
A non-mature orange will be more clear, and the values R,G and B will be higher
 So a non-mature orange can have a higher value of red, green and blue than a ripe orange

So for example, a completely white orange will give a higher value of red than an orange orange ©

The distance has a big effect on color measurement, take care to place your fruits carefully inside the cups, and to cover the hole completely with the fruit. If it is not the case, use another turntable.

From one turntable to another, the scale of color measurement can be different, don't compare values coming from different turntables

Of you want to export the data, just **CLICK WITH THE RIGHT BUTTON OF YOUR MOUSE** on any chart or graph to export to EXCEL, WORD, XML or JPG format (Choose the file name) :



4) Moving upper Endstop

It is recommended to move it down if your fruits are small
So you will save time (The stroke of the sensor will be less for each measurement)

In order to do this, remove power plug from the machine
Move the sensor down by hand (Turn the screw with your fingers)
And then move the upper endstop down – It slides along the axis

